

Island Eco-Track

QUARTERLY SUSTAINABILITY REPORT

Company: Yours ?
Quarter: Q3
Year: 2010

Your Resource Management Program at a Glance

Total Recycling Tons: 42.5
Recycling Rate: 50%
Change in GHG Emissions: -144 Metric Tons of Co2 Equivalent

CARDBOARD (OCC)

Tons:	41.0	Quarterly Growth:	-8.47%	Y/Y Quarterly Growth:	29%
Cost Savings:	\$3,078	Revenue Generated:	\$1,036		

PLASTIC (LDPE)

Tons:	1.5	Quarterly Growth:	-26.47%	Y/Y Quarterly Growth:	67%
Cost Savings:	\$113	Revenue Generated:	\$0		

Monetary Benefits

Total Quarterly Savings:	\$3,191
Total Quarterly Revenue:	<u>\$1,036</u>
Total Savings and Rev:	\$4,227
Total to date:	\$17,958

631.231.8700

Environmental Benefits

Because you recycle, this quarter you preserved:

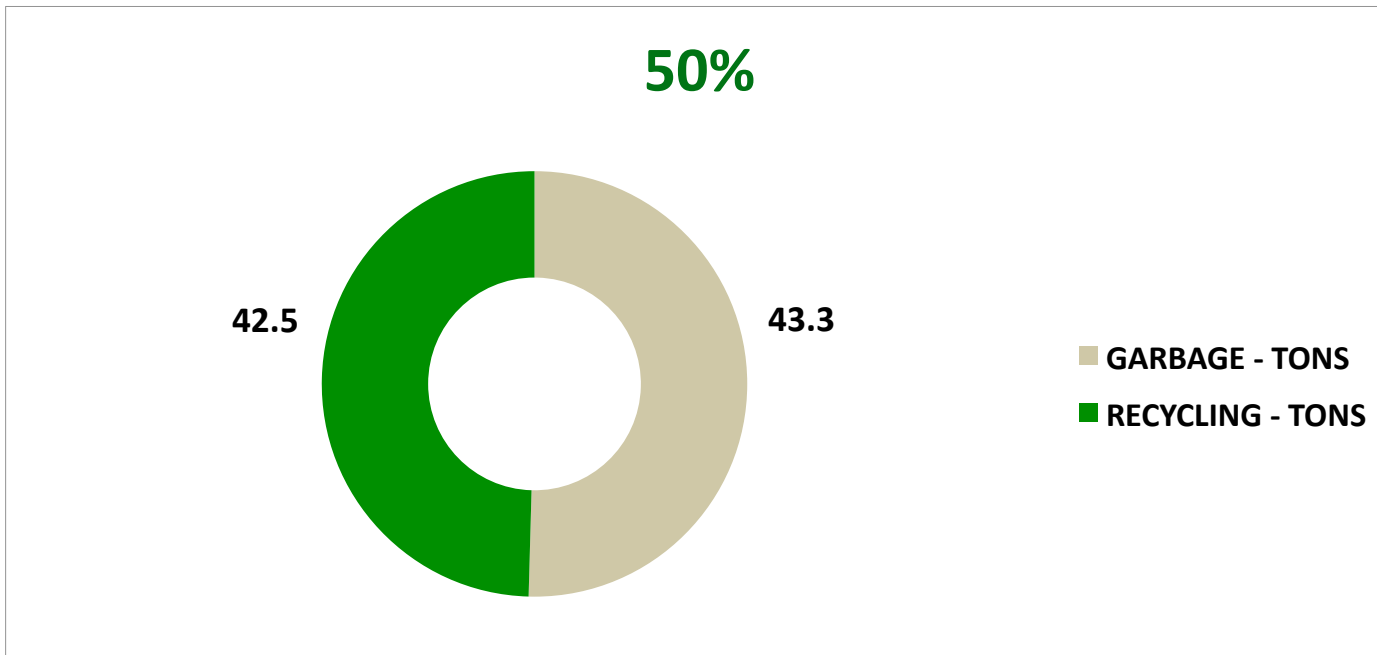
698	Trees
287,280	Gallons of Water
123	Cubic Yards of Landfill Space
164,160	Kilowatts of Electricity
138	Barrels of Oil

www.islandresourcescorp.com

Island Eco-Track

QUARTERLY SUSTAINABILITY REPORT

RECYCLING RATE



The quarterly recycling rate is the amount of material you recycle out of your entire waste stream. It is calculated by dividing the amount you recycle by your total waste stream (recycling tonnage plus garbage tonnage)

$$\text{recycling tonnage} / (\text{recycling tonnage} + \text{garbage tonnage}) = \text{recycling rate (\%)}$$

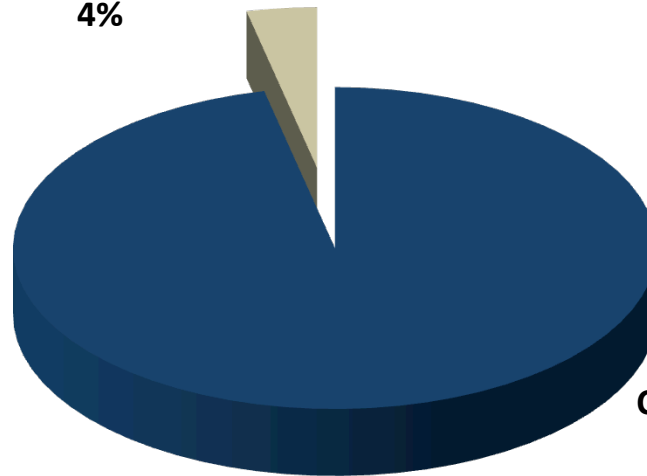
Island Eco-Track

QUARTERLY SUSTAINABILITY REPORT

MATERIAL BY PERCENTAGE

WHAT MAKES UP YOUR RECYCLING PROGRAM?

PLASTIC (LDPE);
4%



■ CARDBOARD (OCC)

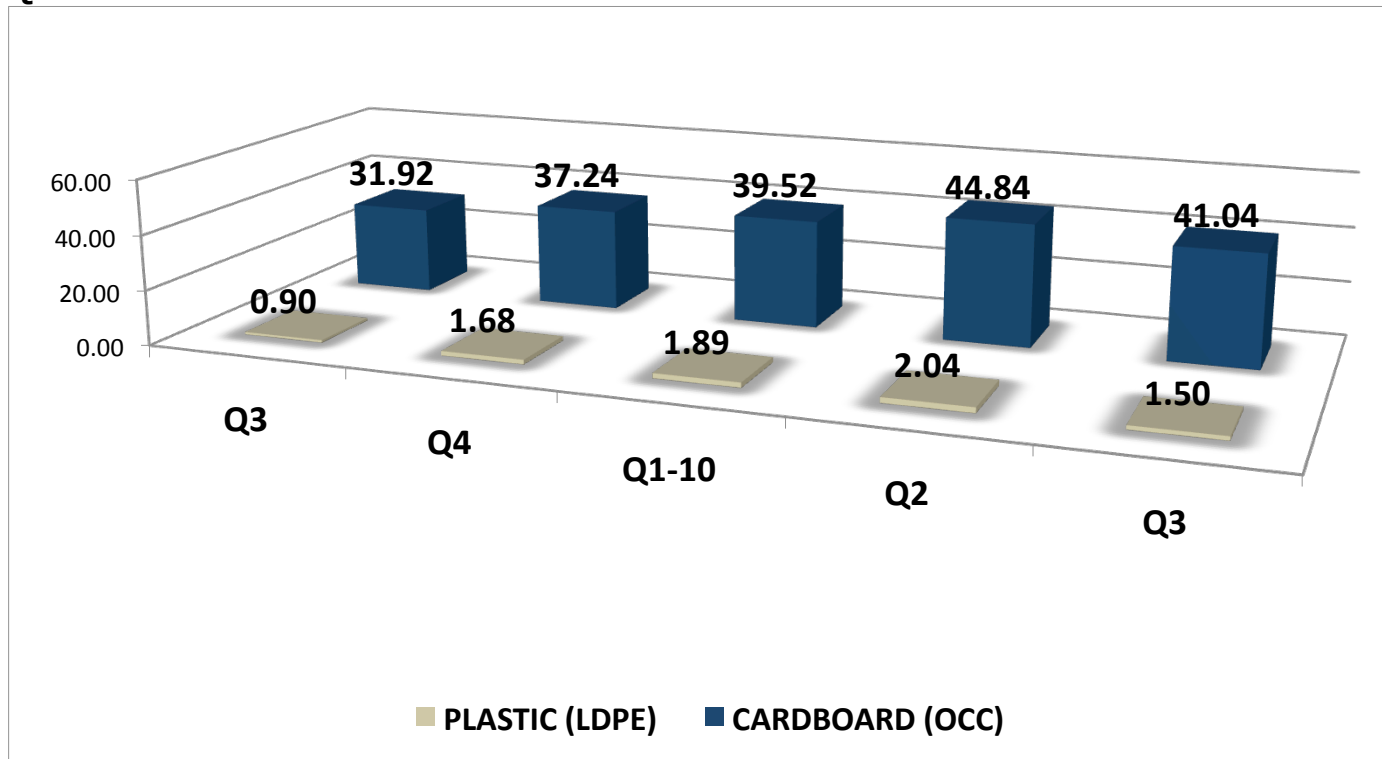
■ PLASTIC (LDPE)

CARDBOARD
(OCC); 96%

Island Eco-Track

QUARTERLY SUSTAINABILITY REPORT

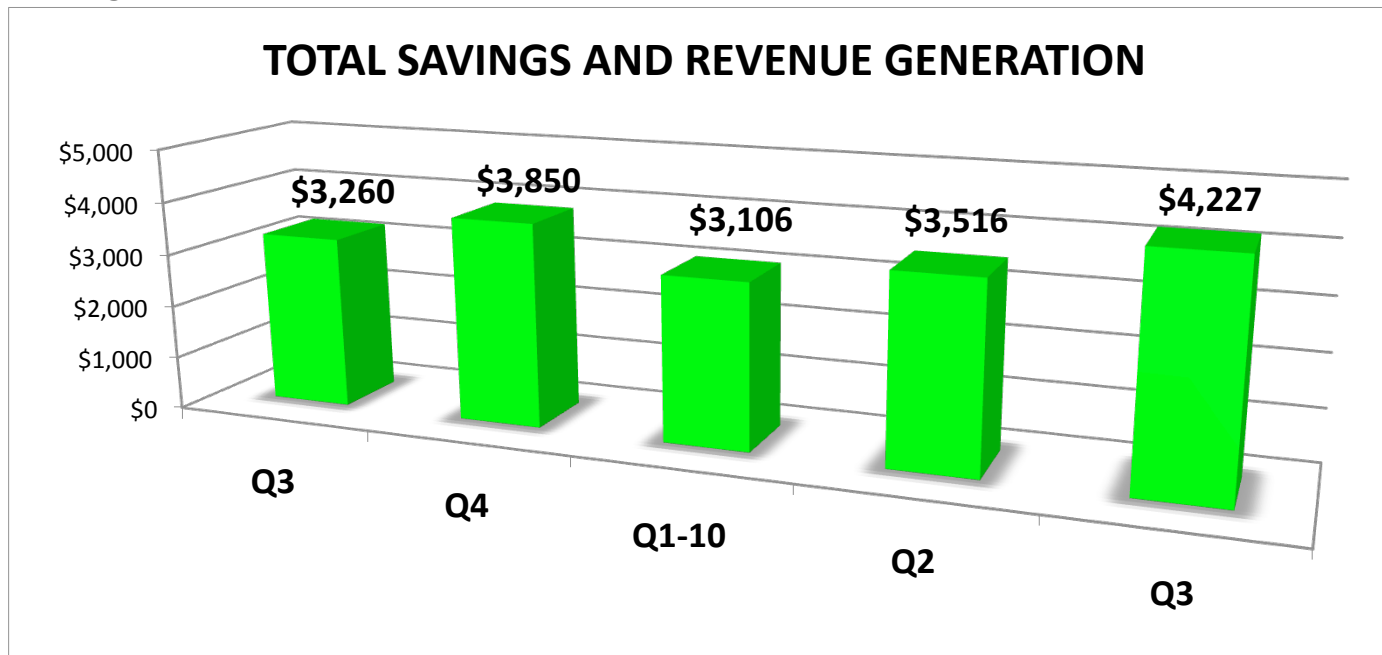
MATERIAL BY QUARTER



Island Eco-Track

QUARTERLY SUSTAINABILITY REPORT

MONETARY BENEFITS



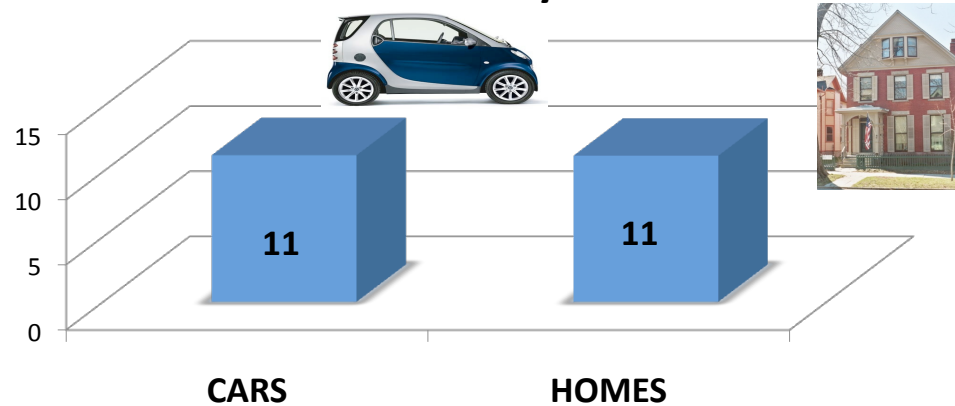
"Savings" are equal to the theoretical costs that would be associated with treating your recyclables as waste and is calculated by multiplying your quarterly recycling volume by \$75/ton, the local costs of disposal. "Revenue" is equal to the total quarterly rebates you received per ton.

Island Eco-Track

QUARTERLY SUSTAINABILITY REPORT

CARBON FOOTPRINT

Your Recycling Efforts Saved the Same Amount of Emissions that are Annually Generated from...

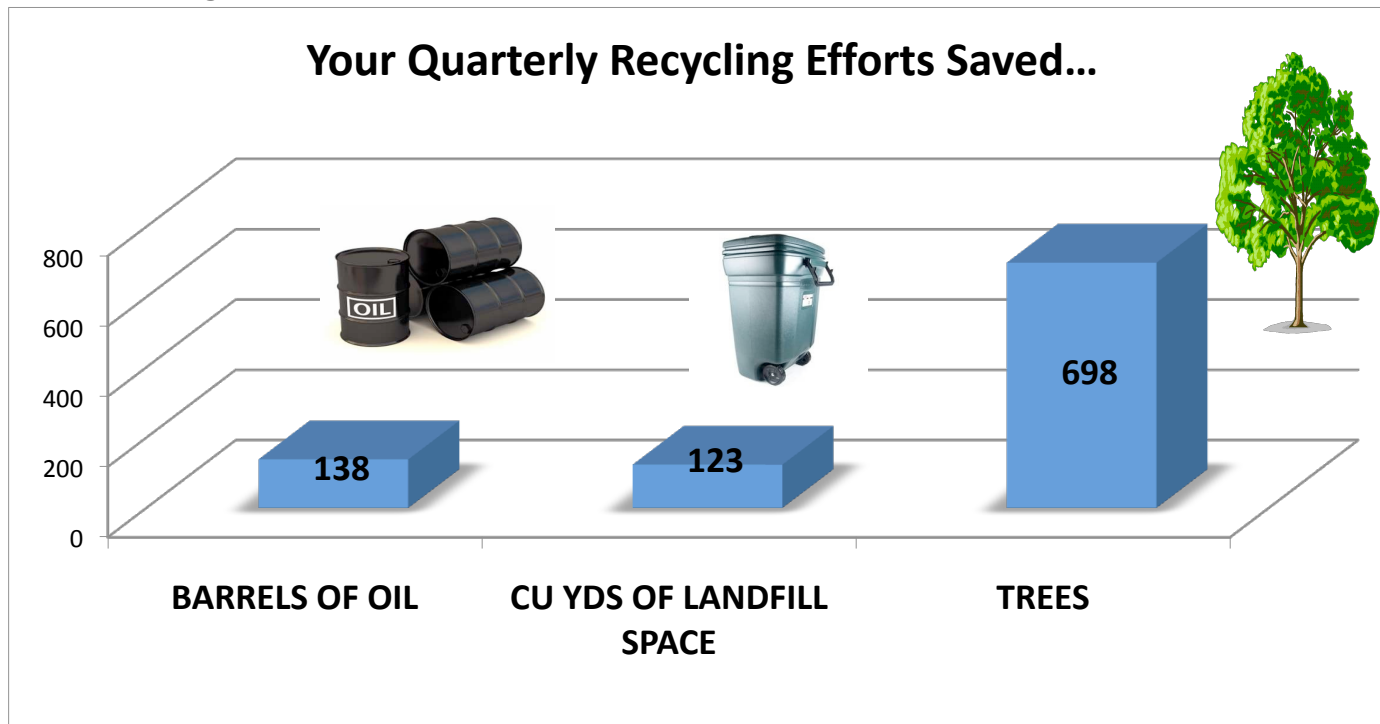


In other words, your quarterly recycling tonnage is equivalent to taking 11 cars *off* the road and *eliminating* the emissions from 11 houses. To calculate the amount of cars - every 5 tons of paper recycled and every 1.5 tons of plastic recycled, instead of being landfilled, is equivalent to the annual GHG emissions from one car. "Homes" represent the combined emissions generated from both the electricity usage and the energy usage on an annual basis. The emissions from the electricity usage and the energy usage of one home is equivalent to 7 tons of paper and 2 tons of plastic recycled, instead of being landfilled, and 10 tons of paper and 3 tons of plastic recycled, instead of being landfilled, respectively.

Island Eco-Track

QUARTERLY SUSTAINABILITY REPORT

ENVIRONMENTAL BENEFITS

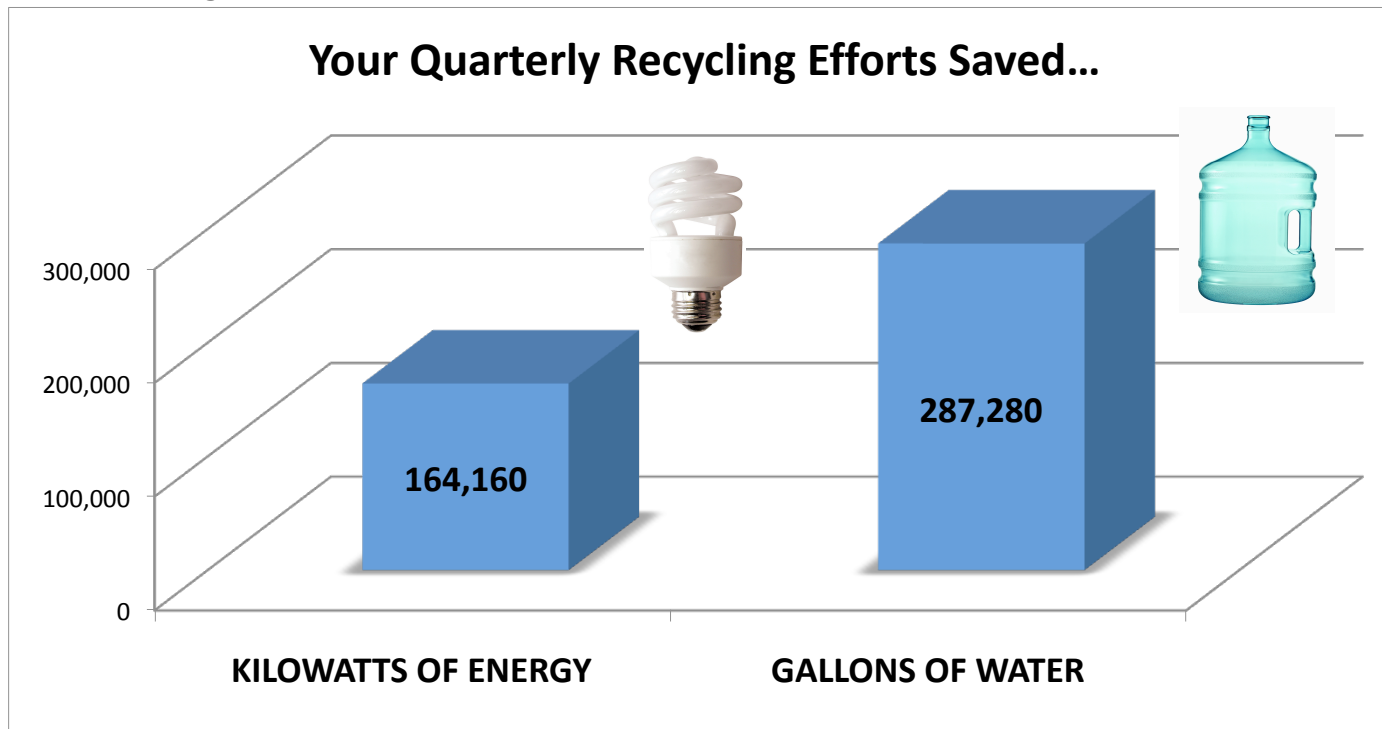


Every ton of paper and plastic that is recycled (instead of being landfilled) is equivalent to 3 and 10 barrels of oil, respectively. Every ton of paper recycled, instead of being landfilled, saves 3 cubic yards of landfill space and 17 trees.

Island Eco-Track

QUARTERLY SUSTAINABILITY REPORT

ENVIRONMENTAL BENEFITS



Every ton of paper recycled, instead of being landfilled, saves 7,000 gallons of water and 4,000 kilowatts of energy.